



GAT MONTHLY MEMBERSHIP PROGRESS REPORT

Results as of: 1/31/2023

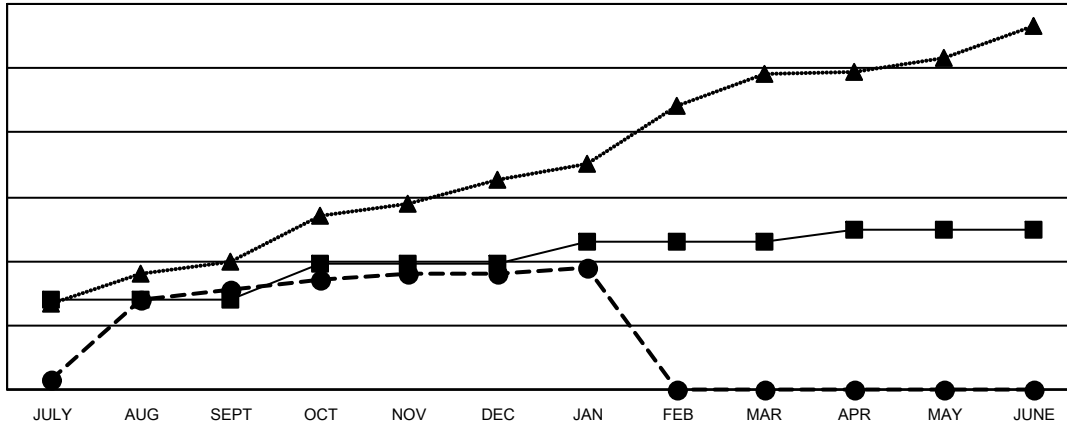
Multiple District 320

LOCATION: INDIA

Clubs			
RESULTS FOR 2022-2023			
QUARTER	NEW CLUB GOAL	NEW CLUBS	DROPPED CLUBS
JULY/AUG/SEPT	28	31	32
OCT/NOV/DEC	11	5	35
JAN/FEB/MAR	7	2	7
APR/MAY/JUNE	4	0	0

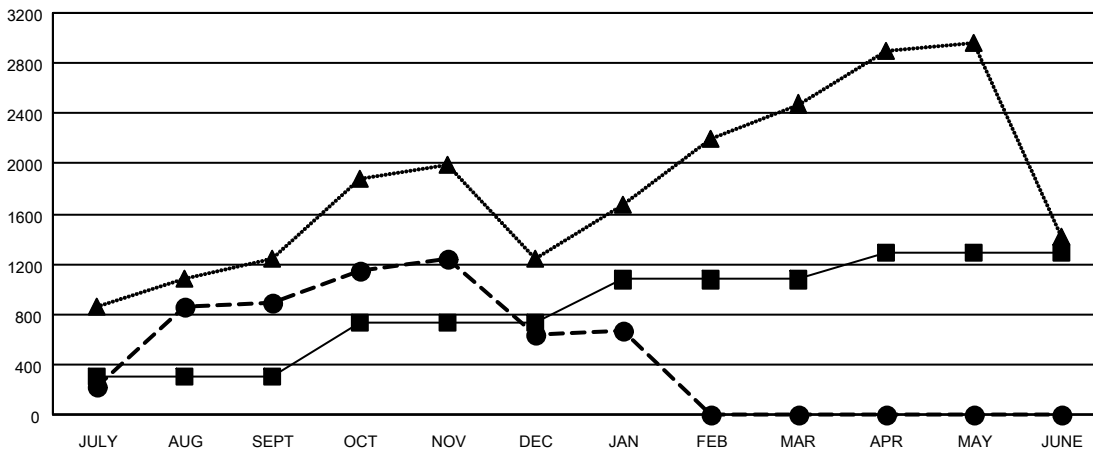
Members			
RESULTS FOR 2022-2023			
QUARTER	MEMBER GROWTH NET GOAL	MEMBER GROWTH ACTUAL	DROPPED MEMBERS ACTUAL (including transfers)
JULY/AUG/SEPT	305	1,607	608
OCT/NOV/DEC	430	1,179	1,387
JAN/FEB/MAR	340	276	198
APR/MAY/JUNE	210	0	0

GOALS AND ACTUAL NEW CLUBS CUMULATIVE



- - CURRENT YEAR GOALS FOR NEW CLUBS
- - CURRENT YEAR ACTUAL NEW CLUBS
- ▲ - LAST YEAR ACTUAL NEW CLUBS

GOALS AND ACTUAL MEMBERS CUMULATIVE



- - MEMBER GROWTH NET GOAL
- - MEMBER GROWTH ACTUAL
- ▲ - LAST YEAR MEMBERSHIP ACTUAL

DROPPED CLUBS: 74	336 CLUBS OF 682 ADDED 1 OR MORE NEW MEMBERS	GENDER DISTRIBUTION
DROPPED MEMBERS	CLICK HERE FOR CUMULATIVE MEMBERSHIP DATA	MALE 15,738 (72.71%)
DECEASED 41		FEMALE 5,905 (27.28%)
CLUB CANCELLED 501		NON BINARY 1 (0.00%)
OTHER 1,651		PREFER NOT TO ANSWER 1 (0.00%)
TOTAL 2,193		TOTAL FAMILY UNIT MEMBERS 11,351
		FAMILY MEMBERS PAYING HALF DUES 6,621